

Inflation Recommendations

SAFETY

Important instructions for safe inflation



Tire pressure directly influences tire life and safety

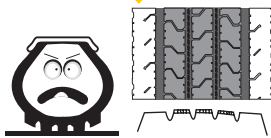


Over-inflation reduces:

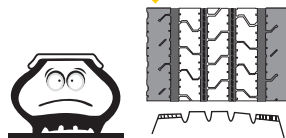
- Comfort
- Traction
- Braking Efficiency
- Tread life span, particularly on drive axle Tires.
- Safety

Under-inflation leads to:

- Reduced vehicle handling and safety
- A reduction in casing retreadability
- An increase in rolling resistance and fuel consumption
- Heat build-up

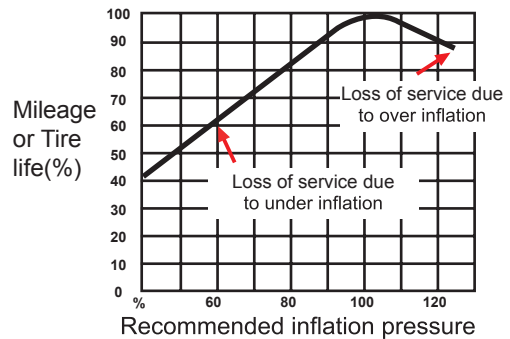


Over-inflation



Under-inflation

Effect of inflation pressure on tire life



ADVICE BEFORE INFLATION

- 1 Weigh your vehicle and its load, axle by axle, to determine tire pressure.
- 2 Measure the pressure when cold (when the vehicle has been stationary for several hours): pressures must be checked at regular intervals and during each service.
- 3 Important safety instruction: pressure increases when the vehicle is in motion. Never reduce the pressure of a hot tire.
- 4 Pressure gauges: must be accurate, handled with care and calibrated regularly



Caution:

Driving with insufficient pressure can damage your tires. Severely underinflated tires must be inspected by an expert.